

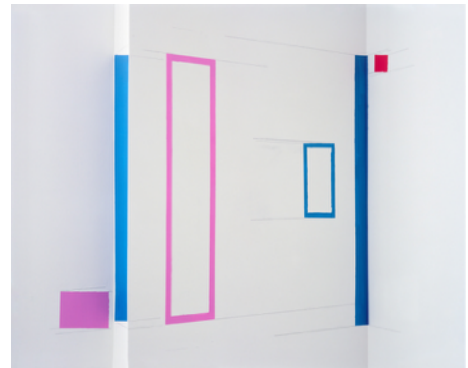
TOWNSEND

FOR IMMEDIATE RELEASE

Launching Online Curatorial Initiative TOWNSEND

Platform Will Showcase Global Emerging and Mid-Career Contemporary Artists

Water Mill, NY, September 2020—Townsend is a new curatorial platform that will showcase the work of a global roster of emerging and mid-career contemporary artists. Through an ongoing series of virtual and brick-and-mortar presentations, Townsend will highlight these artists and their artworks in various curatorial projects, using a strategy that aims to reduce common barriers to entry regarding the viewing, connoisseurship, and collecting of contemporary art.



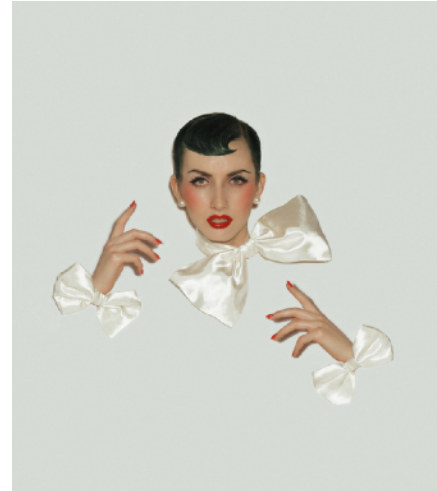
For its inaugural project, *Inside Out*, Townsend has conceived a virtual presentation of limited editions and unique works created in a series. Working across media, the artists Townsend presents are united in their adoption of a robust and sophisticated language of form, line, color, and texture; this in turn becomes a vehicle for an exploration of themes that range from identity politics to climate change. Currently on view at www.townsend-gallery.com, the project offers a powerful introduction to Townsend's artists, with in-depth information about the artworks and artists available equally to enthusiasts and connoisseurs through its online platform.



Future projects will include virtual presentations, and the production of pop-up exhibitions in the Hamptons, New York City, and other domestic and international locations, each introducing artists new to the Townsend platform.

Townsend was conceived by Christopher Milne, an arts professional and artist who has spent two decades cultivating numerous relationships with artists in New York and throughout the world. Ongoing engagement with these colleagues, as well as witnessing the rigor and commitment each brings to their practice, has generated a rich discourse that underpins Milne's curatorial focus. Townsend reflects this discourse - the conversations and the inspiration that have grown from it - highlighting artists whose work deserves greater visibility.

With Townsend, Milne is reimagining standard curatorial models to speak to the current, shifting landscape of contemporary art in uncertain times. At its core, Townsend is concerned with accessibility: developing a curatorial strategy that engages new communities of contemporary art viewers and collectors will therefore be central to the platform as it grows. As a decentralized, primarily digital platform, Townsend offers an exciting and powerful encounter with contemporary art outside of the urban Blue Chip gallery context. Understanding that the opacity of the art market and high prices for contemporary art constitute a significant barrier to entry for many, Townsend is focused on introducing and presenting work that offers greater financial accessibility, while at the same time supporting the sustainable development of its artists' markets.



About / Christopher Milne

Christopher Milne, Townsend Principal, received his Master of Fine Art in Fine Art at the University of Oxford, England; his Bachelor of Fine Art in Fine Art and Art History was completed at NSCAD University, in Halifax, Canada. Milne has worked at Dia:Beacon, the Dia Arts Foundation's museum in Beacon, New York; the Stephen Haller Gallery in New York, New York; and on numerous independent projects. Complementary to his experience as an arts professional, he maintains a studio practice and has exhibited in the United States and internationally. Milne resides in Water Mill, New York.

About / Sydney Hazen

Sydney Hazen, Townsend Associate, is currently pursuing an MA in Art Market Studies at the Fashion Institute of Technology in New York, and received her BS in Textiles, Fashion Merchandising, and Design from the University of Rhode Island. Hazen was previously an intern at Gurr Johns Art Appraisal and Advisory Firm in New York where she assisted with research, condition reports, and valuations. Prior to her role at Gurr Johns, Hazen was an Education Intern at the Gibbes Museum of Art in Charleston, South Carolina. Hazen resides in New York.

Visit www.townsend-gallery.com.

Sign up to receive Townsend news via email at www.townsend-gallery.com.

Follow and connect with Townsend on Instagram @Townsend_Gallery for ongoing Townsend related content.

TOWNSEND

townsend-gallery.com • info@townsend-gallery.com

📷 @Townsend_Gallery 🐦 @TownsendGallery 📘 @TownsendGallery 📌 @TownsendGallery

PO Box 905 • Water Mill, NY 11976 • 917-686-8776

Press Contacts

Christopher Milne

917-686-8776

c_milne@townsend-gallery.com

Sydney Hazen

s_hazen@townsend-gallery.com

Images

Page One

Top: SOPHIA CHAI. Shaft Composition #2, 2020, 20 x 25 inches (50.8 x 63.5 cm), Archival inkjet print on Hahnemühle Photo Rag Ultra Smooth paper mounted on Dibond. Edition of 5 with 1 AP. © Sophia Chai.

Bottom: MIE YIM. Quarantine Drawing #25, 2020, 12 x 9 inches (30.48 x 22.86 cm), pastel on handmade paper. © Mie Yim.

Page Two

DEREK DeWITT. Stella with Bows, 2017, 14 x 12 inches (35.56 x 30.48 cm), archival pigment print on Innova Smooth Cotton High White IFA-14. Edition of 10 with 2 APs. © Derek DeWitt.

###